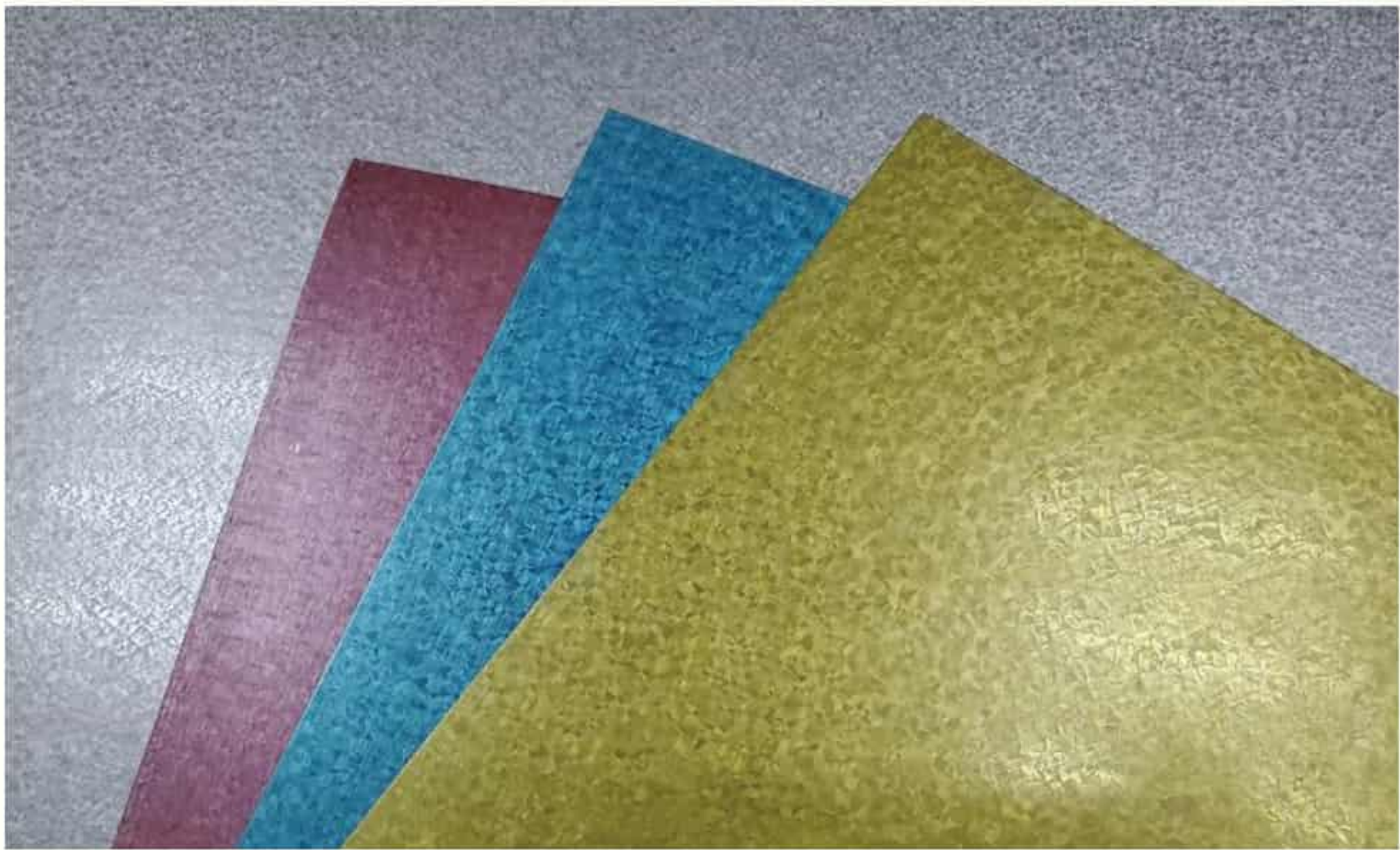


镀铝锌卷
Galvalume Coil



镀铝锌钢板是铝锌合金结构组成，由55%铝、43.4%锌与1.6%硅在600°C高温下凝因而组成.具有较强的耐腐蚀性。是镀锌板的3倍：表面有漂亮的锌花。主要应用于建筑,汽车,冶金和电器行业。

Galvalume steel coil is made by sibley alloy, including 55% aluminum, 43.4% zinc, 1.6% silicon. With strong corrosion-resistance, 3 times more than galvanized steel.Beautiful spangle in the surface.They are mainly used in construction, automotives, metallurgy and household appliances.



产品描述
Product Specifications

标准	ASTM DIN GBJIS3302	Technical Standard	ASTM DIN GBJIS3302
牌号	SGCC SGCD或客户指定	Grade	SGCC SGCD or customer's requirement
材料类型	一般商品级,冲压级	Type	Commercial Quality/DQ
厚度	0.13-1.2mm	Thickness	0.13-1.2mm
宽度	600mm-1250mm	Width	600mm-1250mm
涂层类型	镀铝锌	Type of Coating	ALU-ZINC coated
锌层厚度	40g-150g/m²	Zinc Coating	40g-150g/m²
表面处理	钝化.光整、不涂油、涂油	Surface Treatment	Passivation/skin pass/non-oiled/oiled
表面结构	正常锌花耐指纹	Surface structure	Regular spangle/anti-finger
卷内径	508mm/610mm	ID	508mm/610mm
卷重	3-10吨	Coil weight	3-10metric ton per coil
包装	标准出口包装或定制	Package	Standard export package or customized
硬度	50-71 (CQ级)	Hardness	HRB50-71 (cQ Grade)
	45-55 (DQ级)		HRB45-55 (DQ Grade)
屈服强度	140-300 (DQ级)	Yield strength	140-300 (DQ Grade)
抗拉强度	270-500(CQ级)	Tensile Strength	270-500 (CQ Grade)
	270-420(DQ级)		270-420(DQ Grade)
延伸率	22(CQ级厚度0.7以下)	Elongation Percentage	22(CQ Grade thickness less 0.7mm)
	24 (DQ级厚度0.7以下)		24(DQ Grade thickness less)

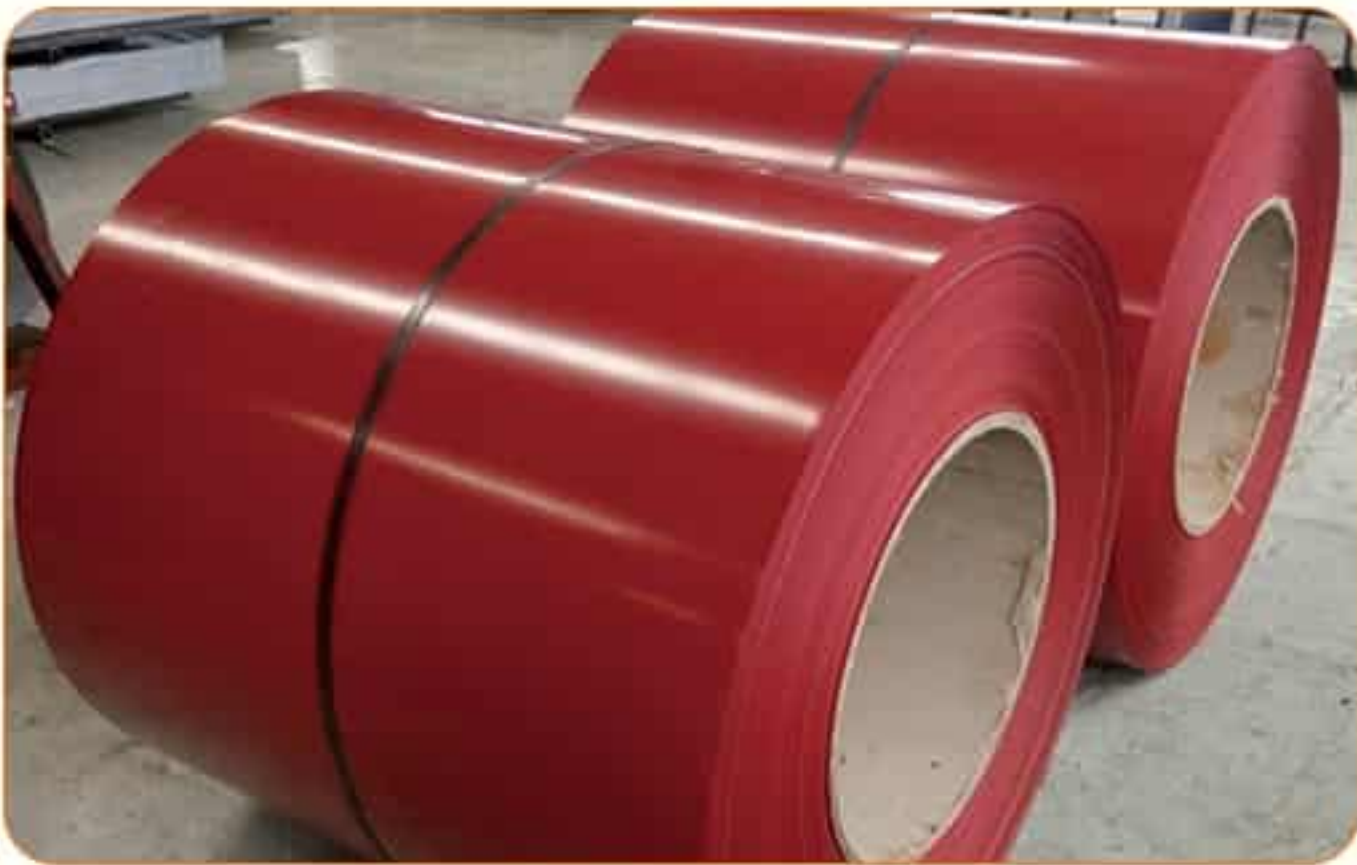
产品用途
Usage & Application

镀铝锌板，具有良好的耐腐蚀性和延展性，有利于深加工等特点。主要用于建筑、汽车、交通及家电等领域，特别是钢结构建筑等行业。

According to the high performance characteristics of corrosion resistance and eoxtensibility as well as excellent further processing, GL is mainly adopted for construction vehicle, transportation and household appliances,especially for the steel structure construction and relative fields.



1.彩涂基板
Basic plate of PPGL



2.建筑板、民用家电板
Constructions and civil usage for household appliances such as ventilation pipe,piping coating and washing machine.oven.